

Results – Print Overview

SmartMan saves the results of all Skills Menu Practices and Tests

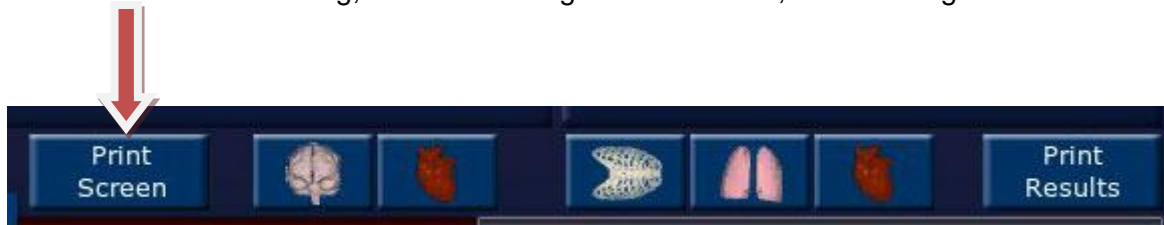
Results are an accurate analysis of the results of every practice or test performed on SmartMan.

To print results you must be logged in and you must be viewing results. You view results either immediately after performing a set of skills or by going to the Actions Menu and selecting 'View Previous Results.

Once you have results showing on the screen you can print the results.

Results Print Screen

When the results are showing, in the middle right of the screen, the following buttons are visible.



Press the Print Screen button in the middle of the screen. This will capture the information on the current screen and can be used to make a complete record of everything showing on the SmartMan window including the color bars and details of the performance.

Pressing the print screen button will take a screen capture of the current screen. It will capture only the SmartMan screen. When you press the button several things will happen:

1. It will create a *.png file.
2. This will automatically be saved in the SmartMan directory where the program is located.
3. The default picture viewer in the operating system will open with the picture. In Windows 7 Home premium, this is likely "Windows Photo Viewer". Click on File, then click on Make a copy and type a file name and select a location where you want to save the file.

To capture different results, for example cycle two of the currently loaded file, in SmartMan click on the next cycle button and then press screen capture again. Then repeat the above procedure.

Note: The SmartMan screen capture button will only make 1 name. If you want to save different screens, follow the procedures to change the name of the file so that it is not over written.

Print Results

When the results are showing on the screen, press the Print Results Button in the middle on the far right side of the screen.



This will generate a report with the person's login name, the type of activity performed and then detail on the overall performance along with detail on several individual sub skills.

This report is created in an html format. Once created the program will open your default browser and you will see the report. Make sure your printer is connected and press the Print button at the bottom of the page

Note:

As this is a form and it is in html, it must have Active-X set to on in order to fill the form with the data. If your operating system asks whether you want to allow Active X for this application, click on yes to allow it. Otherwise the form will be created and it will not show the numbers.

Often a browser will have its print function set to not print the background pictures. If you want to print the logo and header as it shows in the html file, this must be turned on in your browser.

Print Results in MS Word

An html form cannot be copied and pasted into Word. It will copy the form but not the data. First save the html as an MHT, MHTML, MAFF or other archive file format. Then open that file and do the following.

- Select (highlight) everything on the html page, (ctrl A)
- Select Copy (ctrl C)
- Open a new Word file
- Paste (ctrl V)

You can then save the file as any name you wish and you can print the file.